

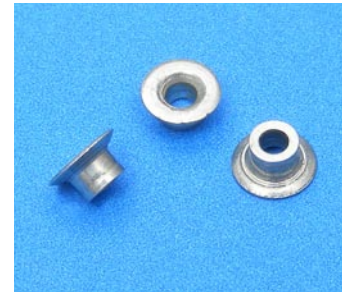
# Double Flush Chobert® Speed Fastening® Rivet

For exceptionally thin Sheet Materials

The "Double Flush" rivet is a Speed Fastening® rivet with countersunk head for use in exceptionally thin sheet materials. Based on the Avdel Chobert® design, it is specifically developed for use in the assembly of computer chassis.

The "Double Flush" is placed into sheets that have countersunk bores on both sides. After installation, the rivet forms a flush fastening on both the front and rear of the application.

Avdel Speed Fastening® Systems are uniquely designed for rapid and reliable component assembly. At the end of each installation cycle, the next fastener is automatically delivered to the nose of the tool ready to repeat the assembly process.



## Features and Benefits

- Flush surface on both sides of the joint
- Reduces excess space requirements within the chassis
- Common hole form can be used throughout the chassis design to reduce complexity
- Can be installed from either direction if accessible
- Expands radially in the material during installation
- Provides superior joint strength when compared to competitive technologies
- One-piece fastener eliminates potential stem fall out that can cause electrical problems
- Speed Fastening® rapid installation with magazine or bowl feed fasteners

## Specifications

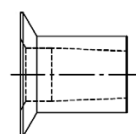
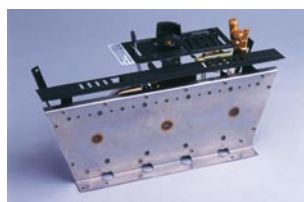
Part Number	01110-11708
Grip range	.078" - .105"
Part Number	01110-11294
Grip range	.095" - .115"
Material	Steel
Surface finish	Zinc, clear passivated
Body diameter	1/8"
Hole diameter	.129" - .131"
Countersink angle	120°
Shear strength typical	229 lbf
Tensile strength typical	341 lbf

## Installation Tools

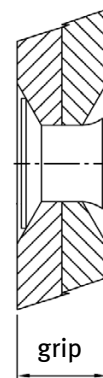
The "Double Flush" is installed securely in seconds with standard Speed Fastening® tools.

## Assembly Applications

- Computer chassis
- Mobile phones
- HVAC
- Small electronic devices
- White goods
- Domestic appliances
- General thin sheet fabrications where material cost and blindside space is at a premium



before installation



after installation

For more information please contact your local Avdel representative.



An Acument™ Global Technologies Company

Avdel USA LLC  
614 NC Highway 200 South  
Stanfield, North Carolina 28163  
Tel. +1 704 888-7100 · Fax -0258  
infoAvdel-USA@acument.com

[www.avdel-global.com](http://www.avdel-global.com)

Avdel Canada, a Division of  
Acument Canada Limited  
1030 Lorimar Drive  
Mississauga, Ontario L5S 1R8  
Tel. +1 905 364-0664 · Fax -0678  
infoAvdel-Canada@acument.com

© 2008 Acument Intellectual Properties, LLC